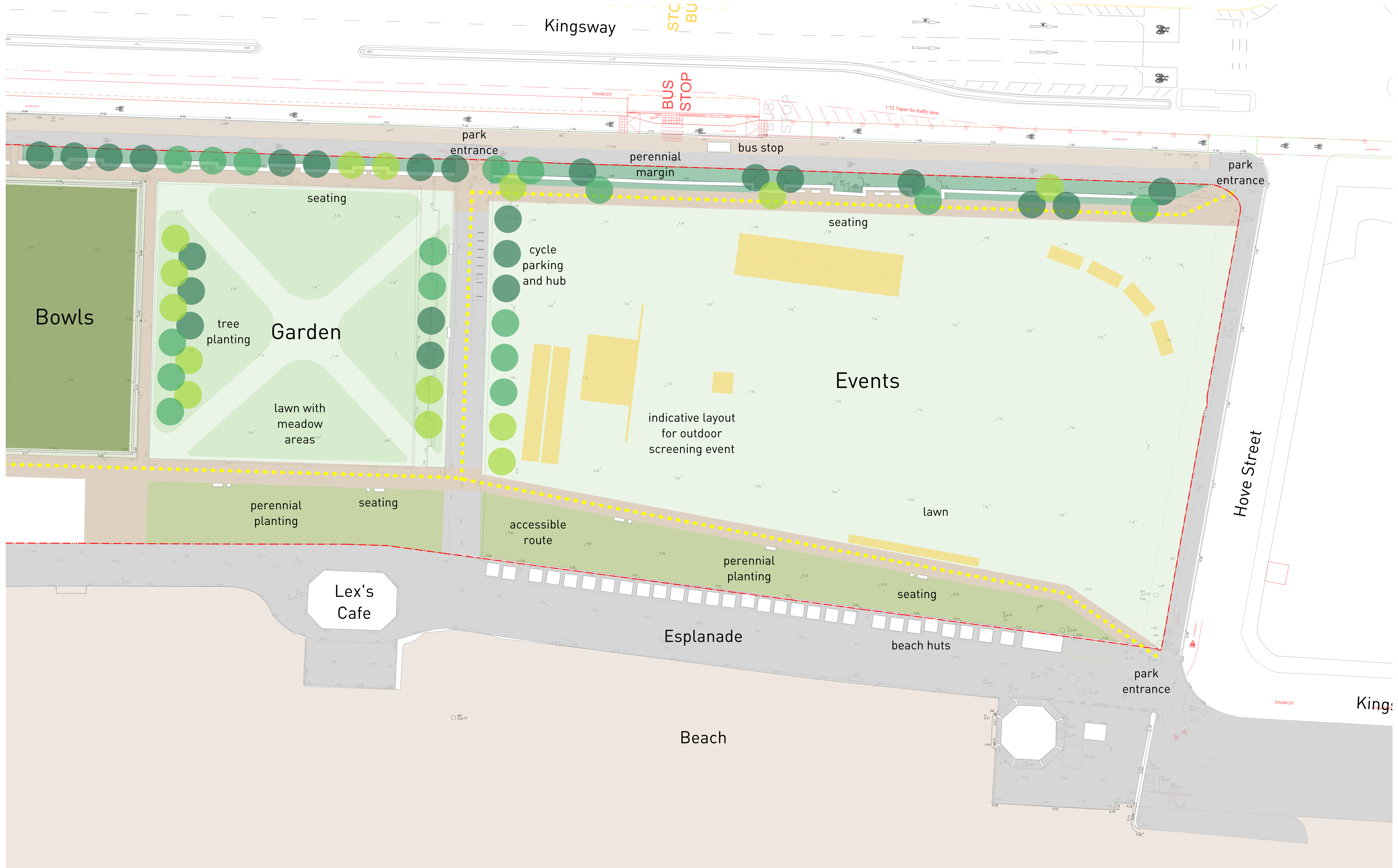


KINGSWAY TO THE SEA: WEST HOVE SEAFRONT PUBLIC REALM IMPROVEMENTS EVENTS SPACE



KINGSWAY TO THE SEA: WEST HOVE SEAFRONT PUBLIC REALM IMPROVEMENTS EVENTS SPACE



Sketch view from the north east of the Events lawn with new pathways, planting and trees

IMPROVED INFRASTRUCTURE FOR EVENTS

- This is a gateway space to the new Linear Park
- It will be retained as a flexible open space for events
- New power and water infrastructure will help to support events
- A new 'accessible' route will run through the Park's length
- Planting improvements, including trees, will improve shade and shelter, while also improving climate change resilience, and increasing biodiversity



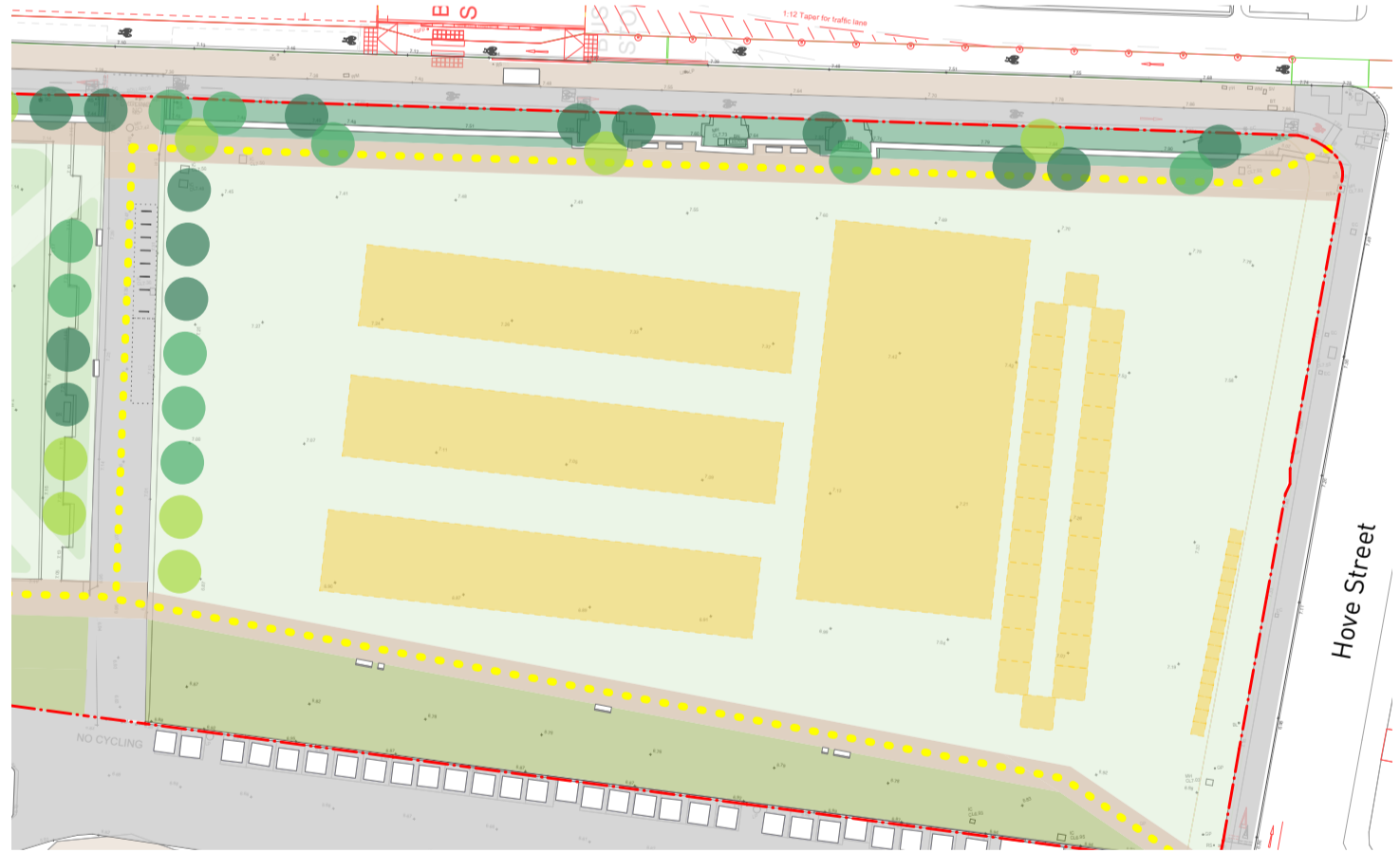
Existing view of the Event Space



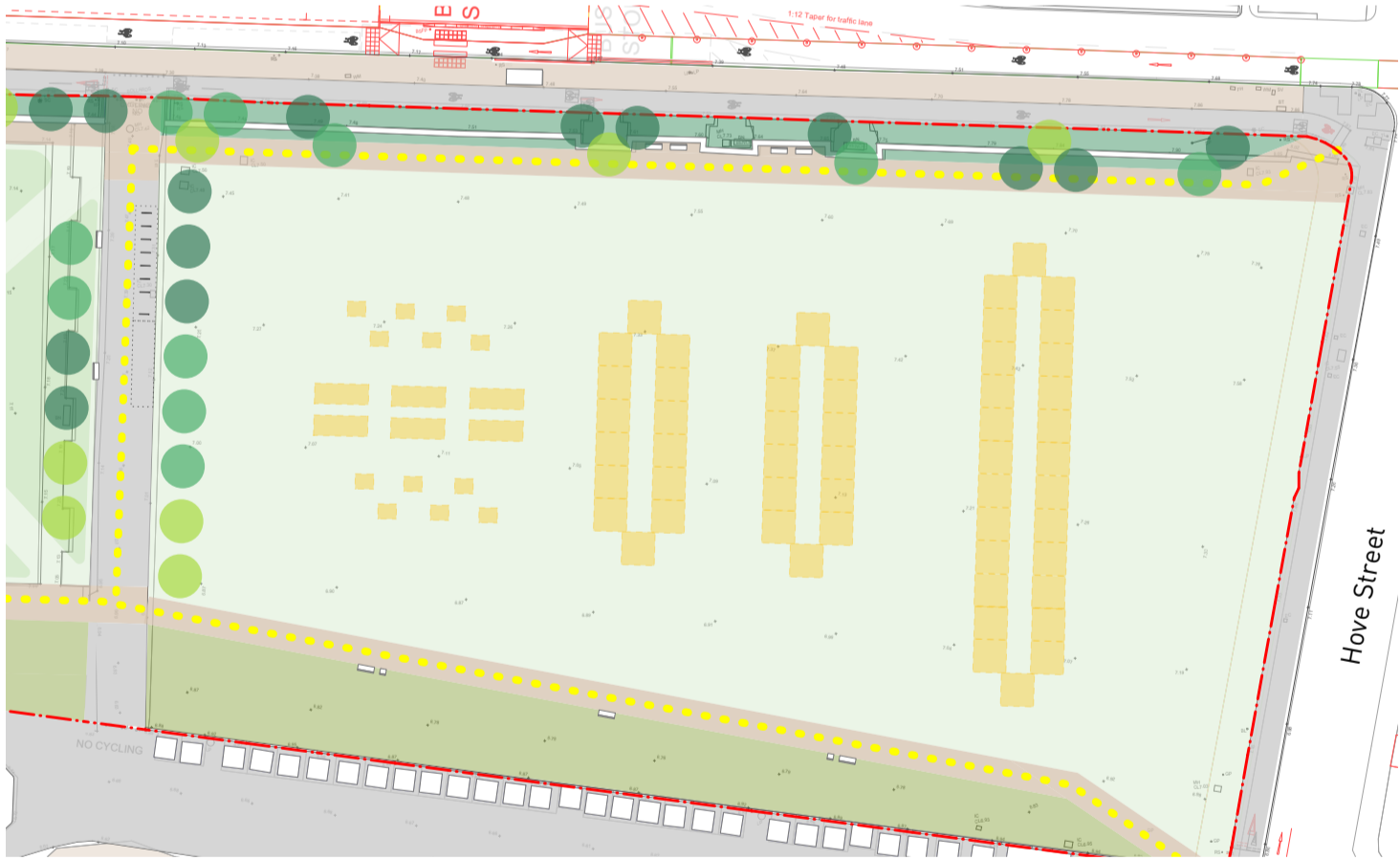
Inside The Riwak - Brighton Festival at West Hove Seafront



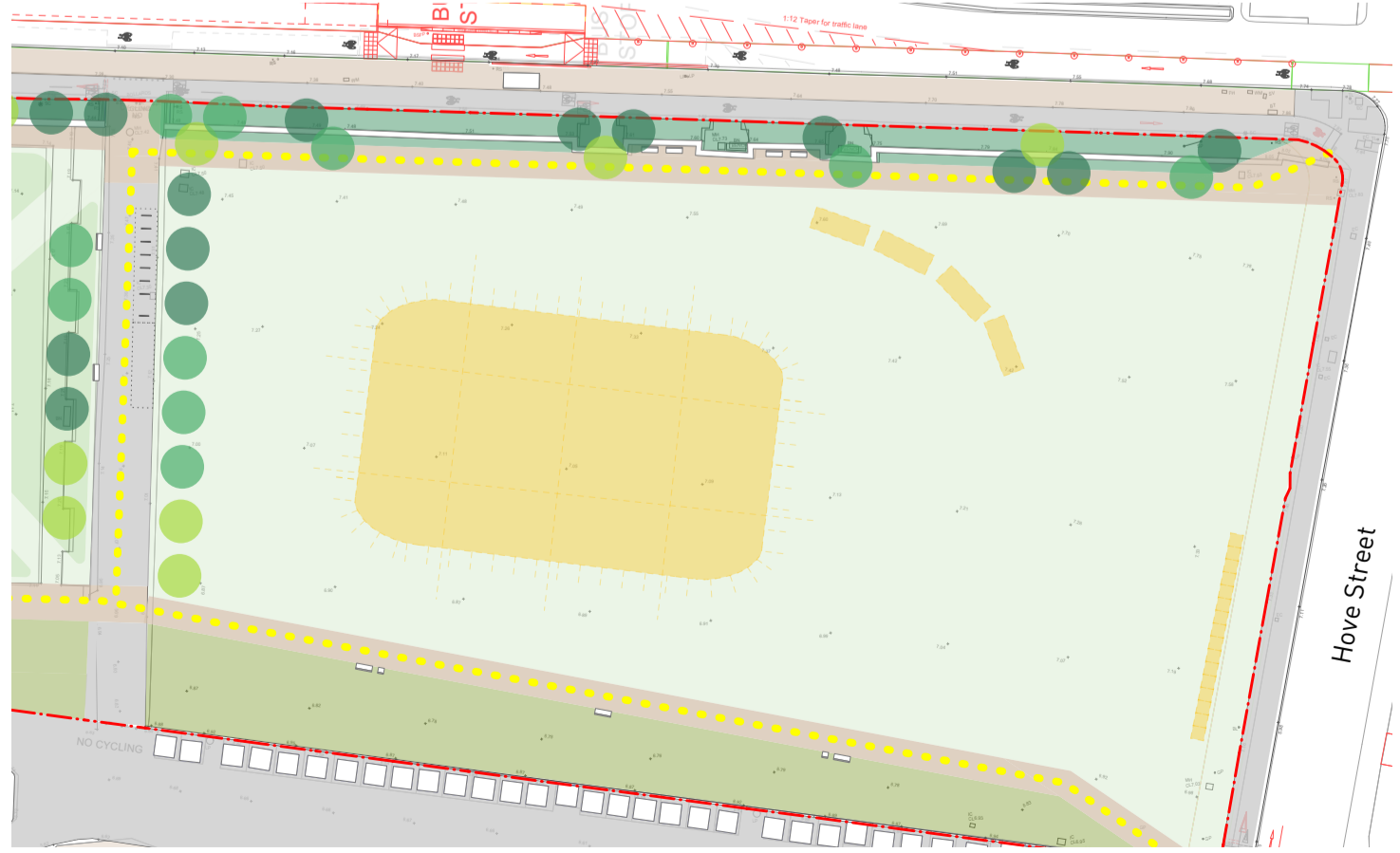
Outside The Riwak - Brighton Festival at West Hove Seafront



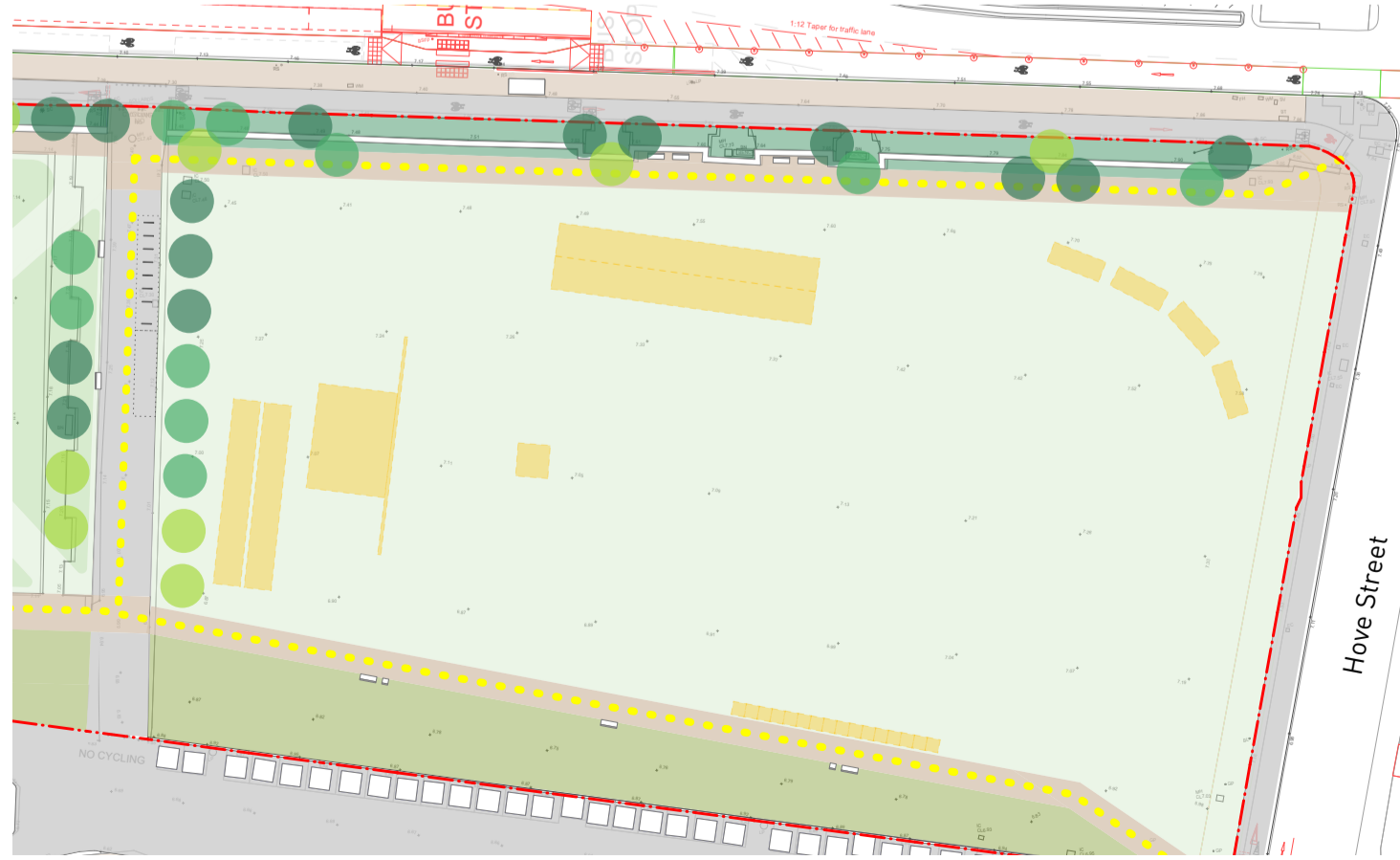
Events Space - Triathlon layout



Events Space - Market layout



Events Space - Food and Drink Festival layout



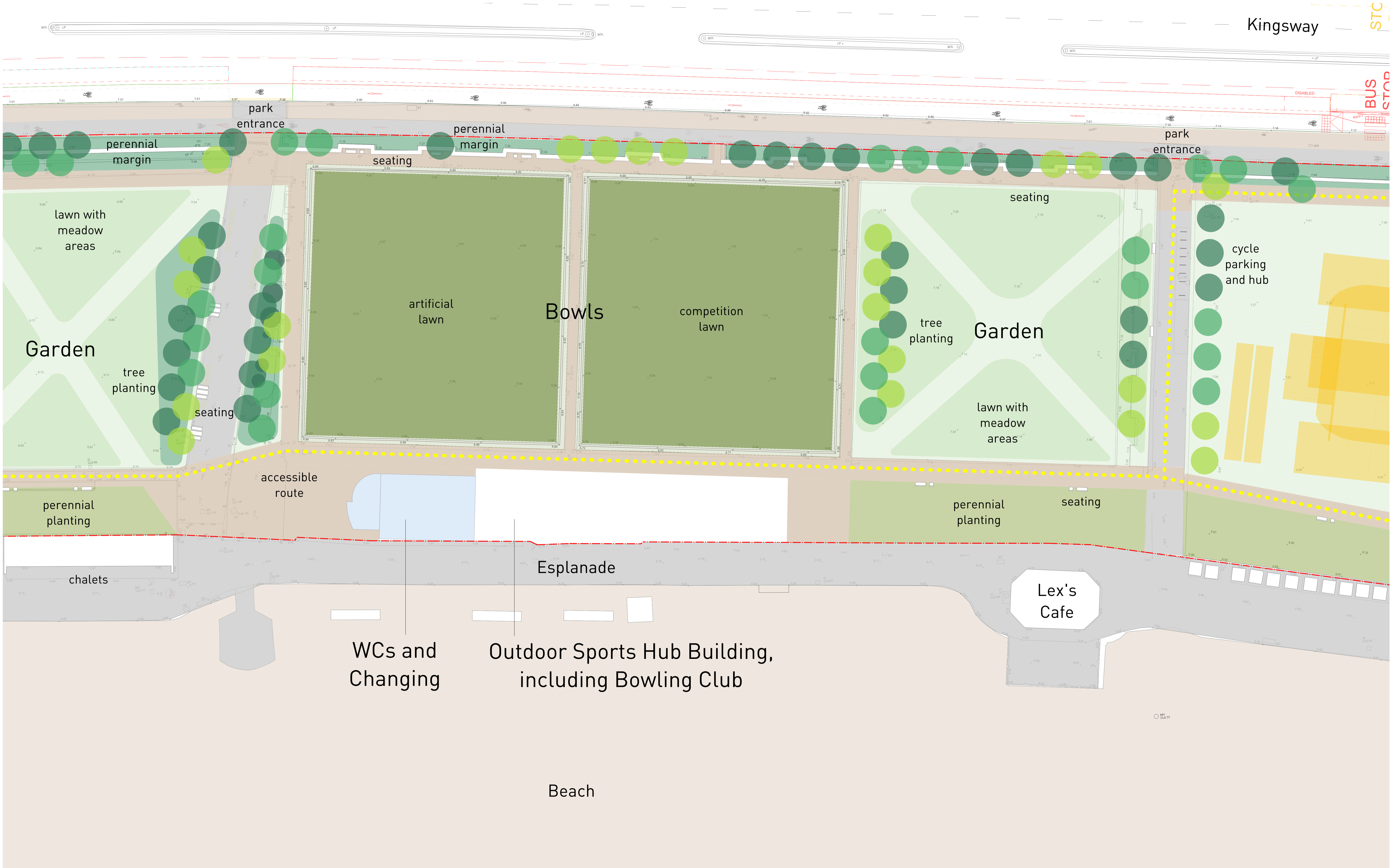
Events Space - Outdoor Screening / Stage layout



Outdoor Cinema Event precedent (Brooklyn Bridge Park, NYC)

KINGSWAY TO THE SEA: WEST HOVE SEAFRONT PUBLIC REALM IMPROVEMENTS

BOWLS



Proposed Bowls and Outdoor Sports Hub Area Plan, 1:250 at A1

KINGSWAY TO THE SEA: WEST HOVE SEAFRONT PUBLIC REALM IMPROVEMENTS BOWLS



Sketch view from south east of new garden space, looking across to Bowling Greens, with Kingsway in the background

THE BOWLING CLUB WILL BE LOCATED BESIDE THE EXISTING GREENS IN A NEW OUTDOOR SPORTS HUB BUILDING

- The 2no existing Bowling Green locations are to be retained
- The western green will become an artificial surface to increase playing time opportunities further through the year
- The competition lawn's existing natural high quality playing surface will be kept
- The green space to the east will become a new Garden
- The Bowling Club will be located in the new Outdoor Sports Hub facing directly onto the competition green
- The existing Pavilion will be removed to allow for the Hub



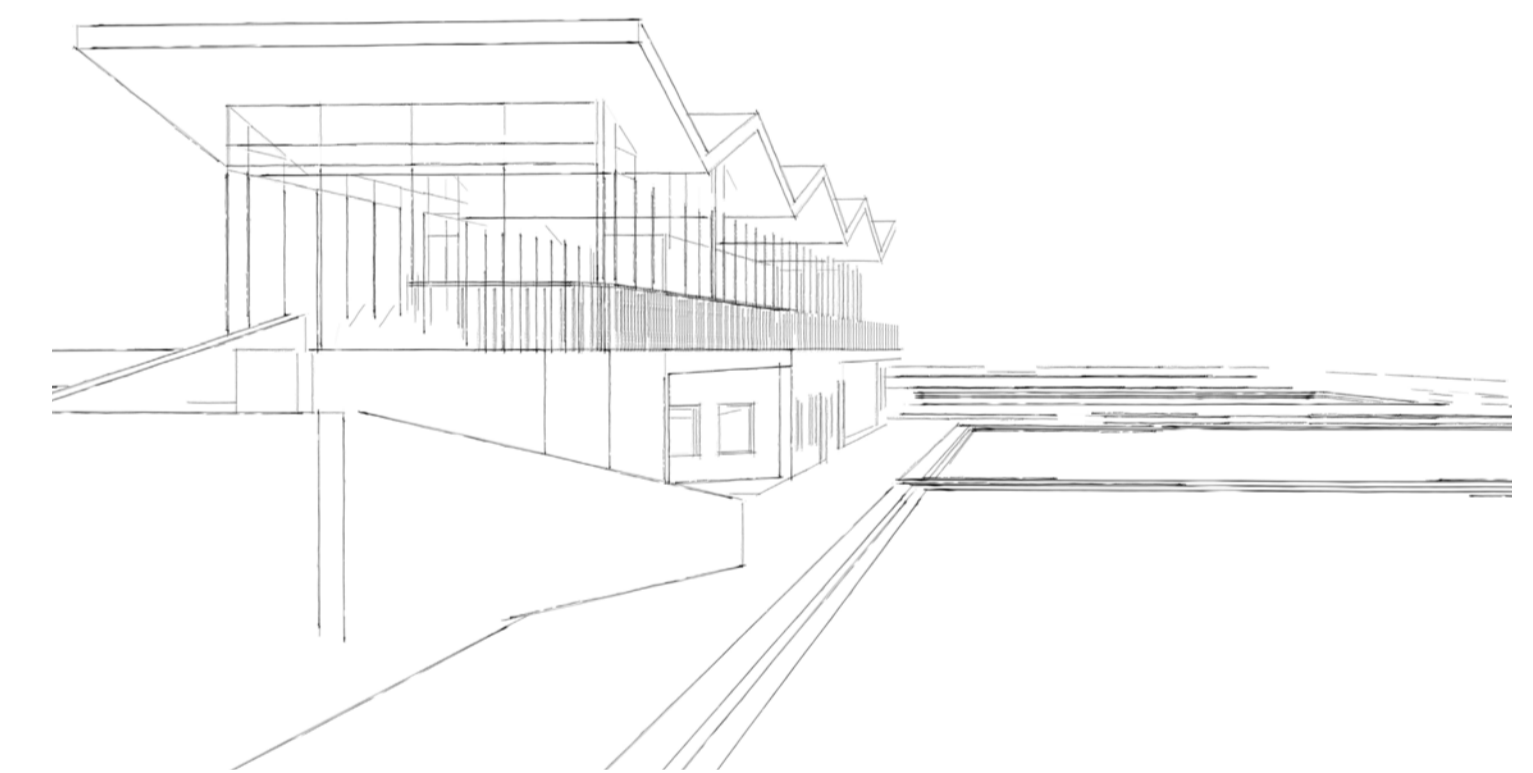
Existing Bowling Greens to be retained in current locations



Existing Ladies Pavilion to be replaced by new Outdoor Sports Hub

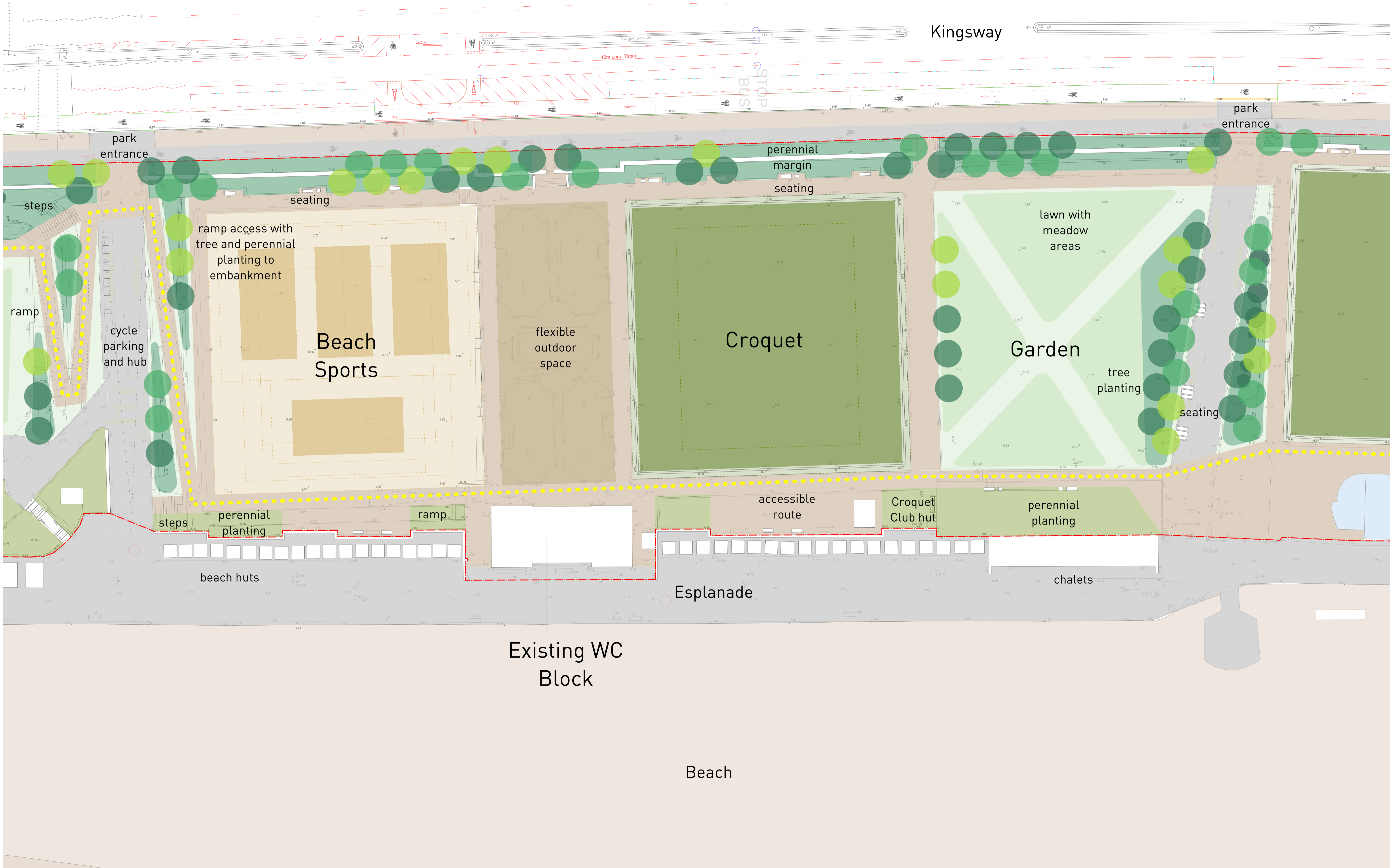


Sketch view from north west looking towards the new Outdoor Sports Hub with views over the west Bowling Green



Sketch view from east

KINGSWAY TO THE SEA: WEST HOVE SEAFRONT PUBLIC REALM IMPROVEMENTS CROQUET AND BEACH SPORTS



KINGSWAY TO THE SEA: WEST HOVE SEAFRONT PUBLIC REALM IMPROVEMENTS CROQUET AND BEACH SPORTS



Artist's impression, view from south west of new Beach Sports facility, with new flexible space and existing Croquet lawn to the east

CROQUET LAWN RETAINED AND A NEW BEACH SPORTS AREA PROVIDED

- The existing Croquet lawn is retained for the Croquet Club
- A new Beach Sports area is provided to the west
- Beach Sports will include 3no Tennis Courts and 1no Volleyball Court, although the layout is flexible, allowing for other courts combinations, as well Beach Rugby and Beach Football
- The area beside the existing WC Block will be resurfaced as a flexible space to complement the Croquet and Beach Sports uses
- The green space to the east will become a new Garden
- The existing Bowling Club building will be removed as part of the Club's relocation to the new Hub building
- Alternative uses for the existing WC Block are being considered but are not part of this project



Existing Croquet Lawn to be retained in current location



Existing sunken area to west where new Beach Sports will be sited



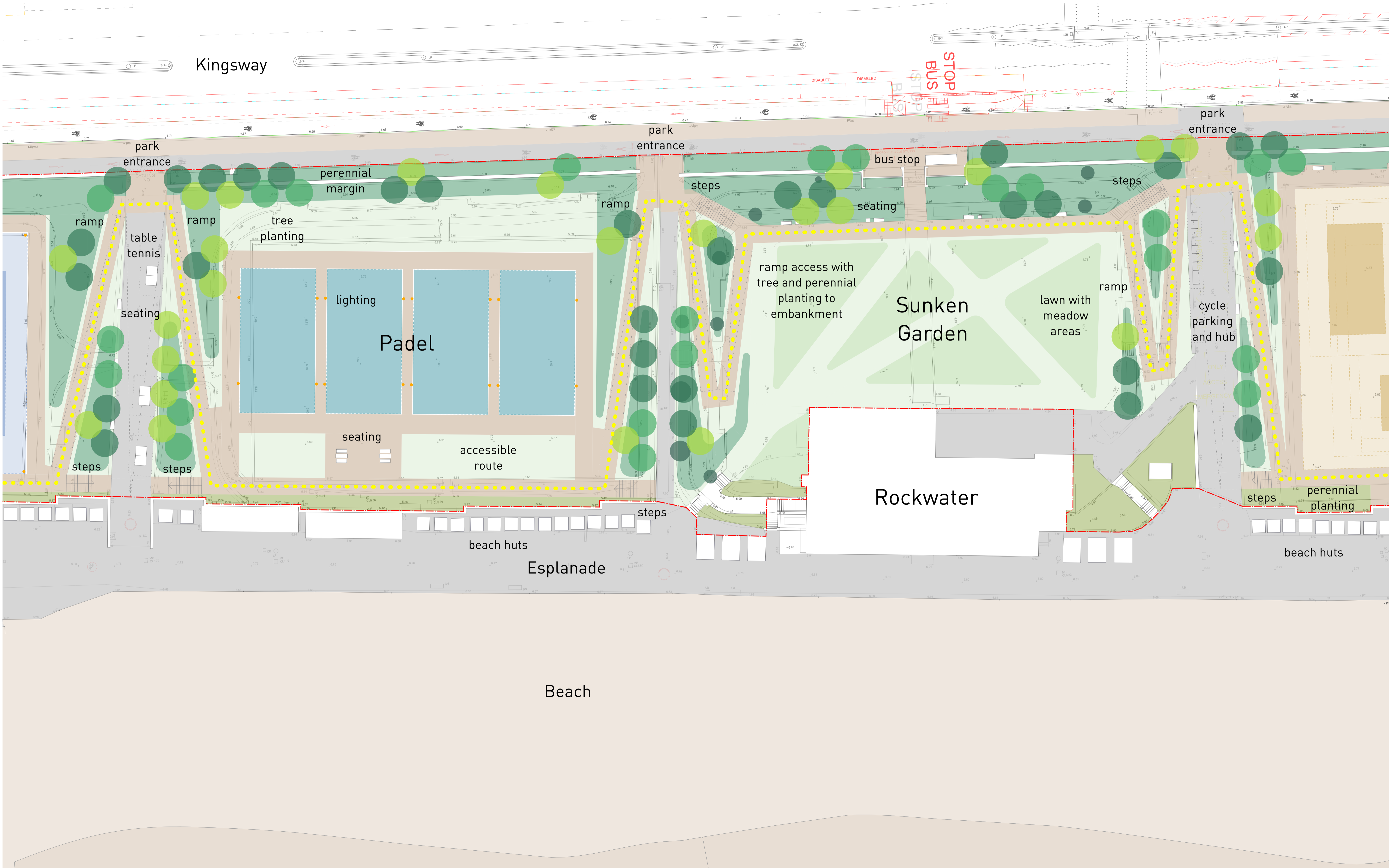
Beach Volleyball precedent (Brooklyn Bridge Park, NYC)

KINGSWAY TO THE SEA: WEST HOVE SEAFRONT PUBLIC REALM IMPROVEMENTS

SUNKEN GARDEN AND PADEL TENNIS



UNTITLED PRACTICE



Proposed Padel Tennis Courts Plan, 1:250 at A1

KINGSWAY TO THE SEA: WEST HOVE SEAFRONT PUBLIC REALM IMPROVEMENTS SUNKEN GARDEN AND PADEL TENNIS



Artist's impression, view from west of new Padel Courts, with Rockwater in background

AN ACCESSIBLE SUNKEN GARDEN AND NEW PADEL TENNIS COURTS AREA

- New ramped inclines will provide full accessibility to the Sunken Garden, consistent with the approach throughout the Linear Park
- Changes to the planting will also relate to the approach elsewhere in the park
- Habitats for wildlife will be supported by a target 20% increase in biodiversity
- The existing eastern Tennis Courts area will be changed to provide 4no Padel Tennis Courts, also accessed via new ramped inclines
- New open spaces will be created around the courts for a range of complementary park uses, eg seating



Existing eastern Tennis Courts area



Existing sunken garden space with the Rockwater in the background



Precedent of new racquet sport similar to Padel Tennis